

## SETUP – Caboose (repositioning/reconfiguring for Right/Left Setups)

080614

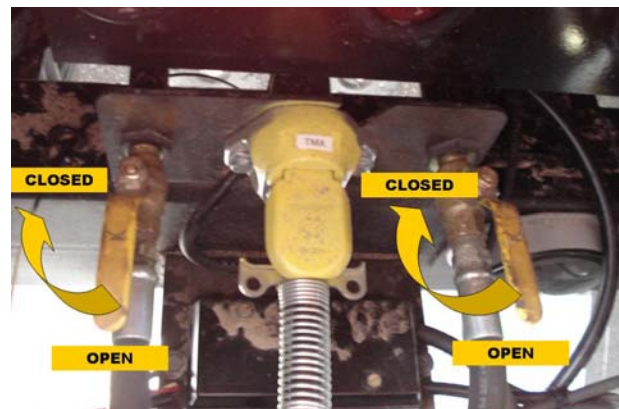
### Hard Level Surface

It is recommended that you reposition or move the caboose on relatively firm level surfaces. It can be done on lesser surfaces but relatively level asphalt or concrete is recommended.

**Disconnect TMA and roll away (see separate instructions).** With TMA removed, proceed as follows.

**Lock tractor brakes only (do not lock trailer brakes) and close rear brake air valves in Caboose before turning tractor off.**

You want to maintain normal operating pressure in the lines prior to closing the caboose brake valves. You are essentially locking in normal pressure to allow the caboose to roll freely to the other end once removed from the trailer. If you lock/set the trailer brakes or turn the tractor off before closing the valves, the rear brakes will lock and you will not be able to move the caboose (either because the brakes are on due to the pressure you've closed in the lines, or because of the lack of pressure which will cause the emergency brakes come on).



The valves are at the back of the caboose as shown in the accompanying picture. Close valves by rotating the two yellow handles as shown. **CAUTION: When the brake valves are closed per the instructions above, the trailers brakes will not be on. Exercise caution and set trailer jacks as provided below to stabilize and secure.**



### Set trailer jack stands.

Set the trailer jack stands at both ends of trailer.

### Disconnect cables & hoses.



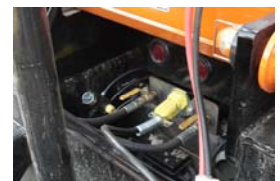
### Reduce air in both sides to 5 lbs.

(see separate instructions for trailer/wall setup – increase pressure if needed to compensate for uneven surface but do not exceed 100 psi)

### Lower jack stands enough to take pressure off Caboose Main Pins

### Remove Caboose Main Pins

Pull and/or tap out. Use pry bar if necessary.



**Lower jack stands further to take pressure off caboose.**

**Remove Caboose from under platform.**

Hitch and receiver are provided to assist in pulling caboose out and around to the other end. Hitch is built into TMA QD. Caboose should roll out easily. If not, check that jack stands are down and pressure is off caboose, and/or confirm that brakes are not locked (see instructions above).



**Reverse to Reattach at other end.**

**Align and push caboose under opposite platform.** Engage king pin first. Then center/align nose in front vertical/horizontal guide. Fully seat. Make sure rear main caboose pins are aligned. Use pry bar if necessary.



**Insert rear main caboose pins.** Use pry bar and rubber mallet, board or hammer if necessary.

**Reconnect hoses and cables.**

**Raise jack stands.**

**Re-OPEN brake valves. BRAKE VALVES MUST BE OPEN for normal operation for the brakes to work.**

